

# Vertiv™ Power Insight Integration with VMware vSphere



Manage Power Infrastructure at Data Centers and Edge Sites More Easily

## Benefits

Vertiv™ Power Insight provides easy integration into VMware's vSphere management platform, enabling IT teams to:

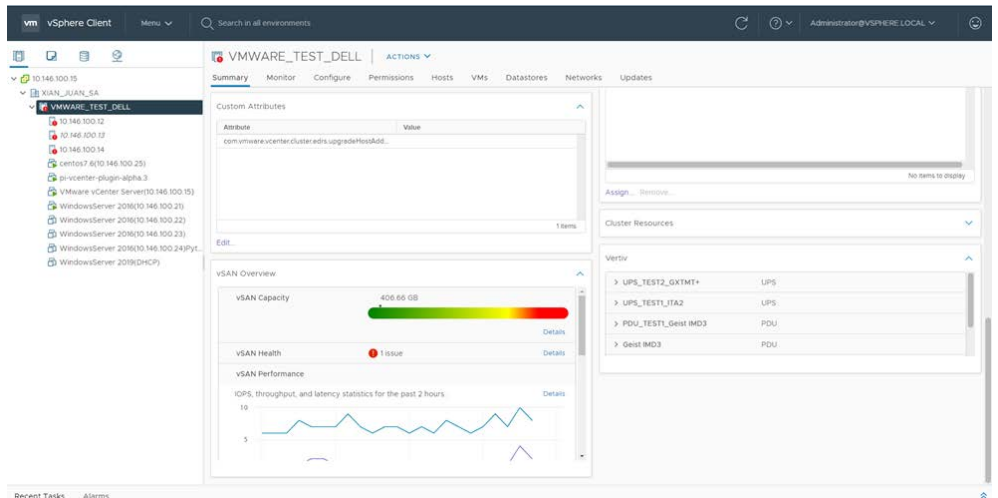
- Improve their visibility into power resources supporting mission-critical applications
- Work more efficiently with fewer logins and centralized management capabilities
- Use centralized visibility and data to optimize the performance of power resources
- Ensure the high availability of physical and virtual servers
- Monitor and support up to 100 Vertiv™ UPS and rPDU solutions from a single console
- Execute controlled shutdowns of compute when a critical event occurs
- Automatically execute simple or complex shutdown processes
- Reduce mean time to recovery (MTTR), by migrating computing workloads to healthy hosts



Organizations use Vertiv Power Insight to oversee the power solutions that support their distributed infrastructure. This web-based software provides a single interface to monitor up to 100 Vertiv™ uninterruptible power supplies (UPSs) and rack power distribution units (rPDUs) and shut down critical computing resources.

Vertiv Power Insight provides a fully certified, seamless integration with the VMware vSphere management platform (formerly known as VMware vCenter). vSphere also integrates with the VMware ESXi bare metal hypervisor. As a result, IT teams now have a single pane of glass to manage Vertiv UPSs and rPDUs directly from their vSphere application.

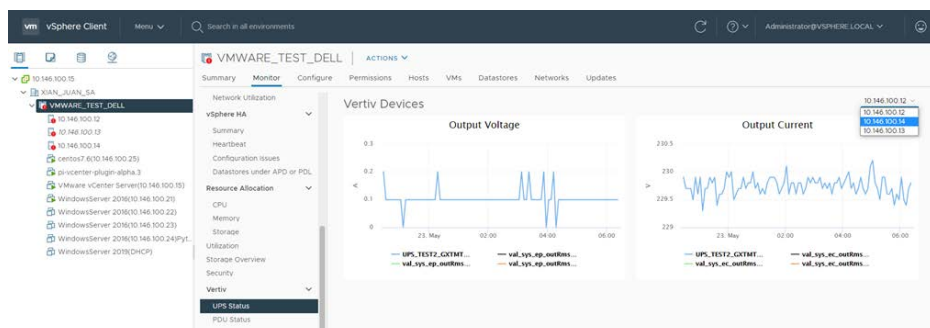
As an out-of-the-box solution, Vertiv Power Insight enables teams to get right to work, connecting and controlling devices. Users can preconfigure Vertiv Power Insight and vSphere plugin to trigger actions based on Vertiv UPS and rPDU conditions and alarms, using resource information already in the system. By so doing, IT teams can architect the power continuity of both physical and virtual servers at their data centers and edge sites.



## Overview

The Vertiv™ Power Insight VMware vSphere plugin provides centralized monitoring and management for physical and virtual servers. By using the plugin, IT teams gain greater visibility into – and control over – up to 100 critical Vertiv power resources, streamlining operational processes and improving computing availability.

- Seamlessly integrate Vertiv Power Insight with VMware vSphere:**  
 Download this free UPS software from Vertiv.com. Get up and running with centralized UPS monitoring capabilities in vSphere within minutes. Vertiv Power Insight passes information directly to vSphere, providing users with continuous situational awareness of power performance.
- View power system status and alarms:**  
 Gain a holistic view of Vertiv™ UPS and rPDU performance across the distributed infrastructure. Use the software as a power manager, to view capacity load percentage, output current, battery percentage charge, and battery time remaining, using insights to improve power performance.
- Configure alarms and notifications:**  
 Configure power alarms and notifications directly in vSphere, rather than logging into two systems and handling systems separately. Automate shutdowns, based on key conditions for Vertiv UPSs and rPDUs. Alternatively, configure advanced shutdowns based on multiple conditions in Vertiv Power Insight software, using combination- or time-based sequences.
- Associate servers and hosts with Vertiv devices:**  
 Add and connect devices easily with intelligent power management capabilities. View the power and physical servers that support virtual machines, improving accountability.
- Run scripts for complex processes:**  
 Run simple or complex actions using scripts within vSphere. Use automation to streamline responses to critical power events. Control power devices and take critical actions without the need for human intervention.
- Trigger virtual machine shutdowns:**  
 Execute controlled shutdowns of virtual machines, protecting vital business operations from disruption. Use sequenced shutdowns to extend virtual machine rundown for critical workloads.
- Trigger vMotion migrations:**  
 VMware vSphere features such as Cluster configurations and vSan help to simplify automated failovers at data center and edge sites. Vertiv Power Insight provides critical power information to VMware vSphere, which intelligently reacts to determine the need for failover, while automation ensures consistency of results.



## System Requirements

### Hardware Requirements

Vertiv™ Power Insight can be installed on a 64-bit machine with minimum system requirements of 8GB memory, 4-core CPU, and 256GB HDD. The recommended system requirements are 8GB memory, 8-core CPU, and 2TB HDD.

### Operating System Requirements

Microsoft Windows 7, 8.1 and 10 (32bit and 64bit), Microsoft Windows Server 2008 R2 (64bit), Microsoft Windows Server 2012 R2 (64bit), Microsoft Windows Server 2019 (64bit), and 2019 Red Hat Enterprise Linux 6.7, 6.9 7.1-7.4 (all-64bit), VMware ESXi 5.5, 6.0 and 6.5 (64bit), VMware 6.7 (and above) required for vCenter Plugin, Microsoft Hyper-V Server 2016 (64bit), Microsoft Hyper-V Server 2012 R2 (64bit).

Vertiv.com | Vertiv Headquarters, 1050 Dearborn Drive, Columbus, OH, 43085, USA

© 2022 Vertiv Group Corp. All rights reserved. Vertiv™ and the Vertiv logo are trademarks or registered trademarks of Vertiv Group Corp. All other names and logos referred to are trade names, trademarks or registered trademarks of their respective owners. While every precaution has been taken to ensure accuracy and completeness here, Vertiv Group Corp. assumes no responsibility, and disclaims all liability, for damages resulting from use of this information or for any errors or omissions. Specifications, rebates and other promotional offers are subject to change at Vertiv's sole discretion upon notice.