



Table of Contents

Products

Racks and Integrated Solutions	3
Computer and IOT UPS	6
Network and Server UPS	8
Rack Power Distribution	12
Vertiv™ Avocent® ITS Solutions	14
Software	23
Rack Cooling	25
Three-Phase UPS	26
Site Applied Products	27

Contact your Local Vertiv Office for application support and pricing

Racks and Integrated Solutions

Vertiv™ Rack System



The Vertiv™ Rack is delivered ready for high density environments to serve your mission critical needs — even as they evolve and change.

- Available in eight standard sizes with load capacities of 3,000 pounds static and 2,250 dynamic.
- All models feature a frame design that delivers about 2.5 inches of additional useable depth compared to competitive racks.
- Features easily removable side panels to help you access your equipment easily, making it easier to make changes in small spaces.
- Tool-less design features enable easy rack configuration and adjustments, equipment installation and service.
- Standard 3-year warranty against defects in material and workmanship.

Capacity: 3,000 lbs Static Load.

Rack Sizes: Heights: 42U, 45U, 48U.

Widths: 600mm, 800mm.

Depths: 1100mm, 1200mm.

Key Applications: Servers and Networking equipment.

Certifications: EIA 310E, UL2416, RoHS, REACH, TAA compliant.

Vertiv™ DCE Rack System



The Vertiv™ DCE rack system is ideal for today's data centers and is designed to meet flexibility, ease of installation and delivery requirements. The Vertiv DCE comes in pre-configured rack configurations customized to meet your specific needs.

- Compatible with Vertiv™ rack PDUs, Vertiv™ Liebert® rackmount UPS, aisle containment, and Vertiv™ Liebert® modular busway.
- Factory installation of rack accessories for fast deployment.
- Easy installation saves time and money: tool-less hinges, dual split side panels, 19" rail adjustment, U markings on rails, low profile casters, tool-less accessories.
- Standard 2-year warranty against defects in materials and workmanship.

Capacity: 3,000 lbs Static Load.

Rack Sizes: Heights: 24U, 42U, 45U, 48U.

Widths: 600mm, 700mm, 800mm.

Depths: 1100mm, 1200mm.

Key Applications: Servers and Networking equipment.

Certifications: EIA 310E, UL2416, BAA/ TAA Compliant, IBC2012.

Vertiv™ SmartCloset™



Vertiv™ SmartCloset™ is a complete solution curated by Vertiv experts to enable rapid and risk-free IT deployments at the Edge. The Vertiv SmartCloset brings together Vertiv™ VR Rack, Vertiv™ Liebert® UPS, and Vertiv™ PowerIT rPDU in one easy-to-order product providing the infrastructure required to support mission critical business operations.

- Simplify IT deployments in Edge applications with pre-validated models.
- Increase deployment speed for critical IT with in-stock components.
- Reduce management complexity by seamlessly integrating infrastructure devices into your IT network for 24/7 remote management capabilities.
- Eliminate the risk of incompatible products by selecting standardized solutions validated by leading IT vendors.
- Enjoy peace of mind with consistent system level standard warranty coverage.

Vertiv™ SmartCabinet™ ID



The Vertiv™ SmartCabinet™ ID has been designed with IP54 environmental protection for these challenging environments where dirt and humidity could severely impact system performance and life expectancy. By isolating the IT equipment housed inside the rack, the SmartCabinet™ ID provides full protection and peace of mind to IT system managers.

- Fully sealed cabinet provides 24/7 protection from harsh environmental conditions that could damage IT equipment
- Integrated cooling takes up zero rack U-space, allowing for more IT installation
- Built-in HMI display with communication capabilities allows for local or remote monitoring and control
- Emergency backup fans maintain proper airflow and avoids overheating
- Multiple rack sizes and cooling capacity options provide flexibility for numerous applications
- Maintain high system availability with uninterrupted backup power with the optional Vertiv™ Liebert® GXT5 UPS*
- Integrate your IT deployment with intelligent rack power distribution units for constant monitoring and high system availability*

**UPS and rPDU are not part of the Vertiv™ SmartCabinet™ ID offering. These are sold separately and are field installed components.*

Vertiv™ SmartRow™ 2



The Vertiv™ SmartRow™ 2 is an innovative approach to data center design by efficiently integrating power and distribution systems, thermal management, security, IT management, and other critical components. The solution comes with the fastest deployment rate, lowest operating cost and the lowest learning curve for operation.

- **Efficient System:** Fully-enclosed design that comes with cold aisle and hot aisle containment. Contained airflow provides greater cooling efficiency.
- **Centralized Infrastructure & IT Management System:** Monitor and manage infrastructure devices (UPS, thermal, sensors & etc.) and IT device (server, switches & etc.) under single platform.
- **Optional integrated Fire Suppression:** No fire suppression system upgrades to the room are needed since fire suppression is integrated into the solution.
- **Controllable Security & Safety.**
- **Demand-Driven Deployment.**

Vertiv™ Rack Wall Mount



Vertiv™ Rack Wall Mount is designed to be mounted directly on walls, it organizes and secures devices like network switches, and servers, keeping them off the floor and neatly accessible.

- Various depths to serve multiple channels:
 - Short depth for networking applications.
 - Medium depth for deeper networking/edge server.
 - Full depth for edge compute applications (will support full depth servers and more of our UPS's).
- Swings away from wall on hinge for easy back-door access with lock.
- Reversible mounting for left-hand or right-hand opening.
- Complete rack stability and security –cabinet elevation/pallet brackets.
- Outer protection –Complete outer wrap & protective inserts.

Capacity: from 150 to 300 lbs.

Rack Sizes: Heights 12U, 19U, 25U

Widths: 21", 24"

Depths: 24", 31"

Key applications: Servers and Networking equipment

Certifications: UL

Vertiv™ Rack 2-Post and 4-Post



Vertiv™ Rack 2-post and 4-post is a vertical equipment rack designed to support lightweight IT and telecom equipment in network rooms, data centers, or office environments. It provides a stable mounting platform for equipment that's shallow and doesn't require the full support of a 4-post rack. However, if needed our 4-post rack is a sturdy and versatile equipment rack that provides balance and support for heavier and deeper IT and networking equipment.

- Easy access to IT equipment for installation and maintenance.
- Flexible mounting for lightweight IT equipment.
- Efficient airflow which enhances natural cooling thanks to the open design.

Rack Sizes: Height 45U

Depths: 24", 29", 32", 36"

Key applications: Servers and Networking equipment

Certifications: UL

Computer and IOT UPS

Vertiv™ Liebert® Power-UPS Lithium, Lithium-Ion UPS, 400VA



The Liebert® Power-UPS Lithium UPS is a compact and lightweight standby/offline UPS that utilizes lithium-ion technology to deliver a longer life expectancy, and reduced replacement costs. Designed to protect computers, workstations, retail point-of-sale (POS) equipment, wireless networks and routers, surveillance systems and other electronics. The Liebert Power-UPS Lithium is an ideal choice for electronics that need reliable, economical and long-lasting power protection.

- Standard 5-year warranty provides peace of mind that your investment is protected against potentially costly equipment failures.
- Achieve the lowest total cost of ownership over the lifetime of the UPS with fewer battery replacements and up to 10 years of useable life.
- Lithium-Ion battery technology offers better performance in high temperature environments, supports up to 10 times more discharge cycles, and delivers faster recharge times compared to VRLA batteries.
- ENERGY STAR certified UPS provides backup power and protection during damaging surges, spikes or power outages while remaining energy efficient.



Vertiv™ Liebert® PST5 UPS, 350-850VA



The Liebert® PST5 UPS provides battery backup and surge protection for desktop computers, gaming consoles, workstations, wireless networks and routers, surveillance systems and other electronics.

- Designed with easy controls for worry free operation, the Liebert PST5 features ample time for you to save your work in progress and/or complete an orderly shutdown for your equipment when you experience a power outage.
- Protects televisions, desktop computers, gaming consoles, workstations, networks/routers, surveillance and other important electronics.
- ENERGY STAR certified UPS provides backup power and protection during damaging surges, spikes or power outages while remaining energy efficient.



Vertiv™ Liebert® PSA5 UPS, 500-1500VA



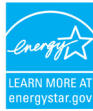
The Liebert® PSA5 UPS is an economical, line-interactive UPS battery backup technology designed with the features you need for reliable power protection for small/home office computers, network gear, and home equipment shutdown.

- Designed with easy controls for user friendly operation, the Liebert PSA5 provides the run time to save work in process and start an orderly shutdown your equipment.
- Provides backup power and protection during damaging surges, spikes or power outages.
- Standard 3-year full unit coverage including the battery with no-hassle, advanced replacement warranty.
- ENERGY STAR certified UPS provides backup power and protection during damaging surges, spikes or power outages while remaining energy efficient.



Network and Server UPS

Vertiv™ Liebert® PSI5 UPS, 750-5000VA



The **Liebert® PSI5** is a compact rackmount or tower, line-interactive UPS system designed especially for IT applications such as network closets and small data centers.

- Eight capacities from 750VA to 5000VA models available with both 120V or 208V models.
- AVR technology to protect against voltage fluctuation and maximize battery life.
- Up to 6 minutes of runtime at full load. External battery cabinets options available to scale runtime.
- Tower, 1U Rackmount, 2U Rack/Tower.
- Standard 2-year no-hassle advanced replacement warranty.
- Vertiv™ Liebert® Intellislot™ for networking cards and remote management.
- TAA models available.
- Energy Star certified UPS provides backup power and protection during damaging surges, spikes or power outages while remaining energy efficient.

Vertiv™ Liebert® PSI5 Lithium-Ion UPS, 1500-3000VA



Lithium-ion technology delivers double the life of lead-acid batteries along with a lower total cost of ownership, making the **Liebert® PSI5 Lithium-Ion** line-interactive UPSs ideally suited for server rooms, network closets, and other edge or distributed IT applications.

- 0.9 Output Power Factor delivers more usable power, saving space and costs.
- 1500, 2200, 3000VA 2U, and 3000VA Short Depth 3U Rack/Tower models, and 1500VA Tower model.

Key Benefits vs. VRLA

- Lower total cost of ownership – few (or no) battery replacements, less maintenance.
- 2-3 times longer battery life.
- Longer runtime, up to 9min at full load.
- Standard 5-year factory warranty.
- Quicker recharge times – up to 90% in 2 hours.
- Better battery performance at higher temperatures.
- Energy Star certified UPS provides backup power and protection during damaging surges, spikes or power outages while remaining energy efficient.

Vertiv™ Liebert® GXT5 Single Phase, Online Double Conversion UPS, 500-20,000VA



The Liebert® GXT5 UPS is a generator-friendly double conversion online UPS solution which offers premium power protection and continuous power conditioning in a compact and flexible rack/tower design.

- Enhanced local and remote management capabilities enable users to understand the status of the UPS and environmental conditions, and take action when necessary.
- Scalable Runtime featuring auto-detection of external battery cabinets to maximize battery runtime.
- Integrated serial connection for Vertiv™ Avocent® Advanced Console Server (ACS) integration or direct terminal control of the UPS.
- Web and SNMP communications for remote monitoring and management of the UPS with optional RDU101 network card and free Vertiv™ Power Insight software.
- Factory-installed RDU101 Network Card included with 5-20kVA models.
- Integrated Maintenance Bypass Cabinet (MBC) for UPS maintenance or replacement without shutting down connected equipment included in 5-10kVA models. Optional 0-U MicroPODs available for 500-3000VA models.
- Vertiv™ Liebert® GXT5 TAA 1000-3000VA products available.
- ENERGY STAR certified UPS provides backup power and protection during damaging surges, spikes or power outages while remaining energy efficient.
- Standard 5-year factory warranty.



Vertiv™ Liebert® GXT5 Lithium-Ion UPS, 1,000-10,000VA



Liebert® GXT5 Lithium-Ion Overview

- 1000VA, 1500VA, 2000VA, & 3000VA, 120V UPSs in a 2U rack/tower convertible form factor with an internal lithium-ion battery and the ability to add up to (8) external battery cabinets (EBCs) for extended runtime.
- 5000VA & 6000VA, 120V/208V UPSs in a 3U rack/tower convertible form factor that supports up to (8) EBCs, and 8kVA & 10kVA, 120V/208V UPSs in a 4U rack/tower convertible form factor that supports up to 8 (pairs of) EBCs for extended runtime.
- Standard 5-year warranty provides peace of mind that your investment is protected against potentially costly equipment failures.
- Achieve the lowest total cost of ownership over the lifetime of the UPS with fewer battery replacements and a 10 year expected useful life.
- Hot-swappable, user-replaceable lithium-ion batteries increase the useable life of the UPS and allow you to easily replace the batteries without disrupting power to connected equipment.
- Lithium-Ion battery technology offers better performance at higher temperatures, supports up to 10 times more discharge cycles, delivers faster recharge times, and is more environment-friendly compared to VRLA batteries.
- Includes the RDU101 Network Card for remote management of the UPS.
- Integrated Maintenance Bypass simplifies UPS maintenance and replacement, if required, without having to shut down the connected equipment.
- ENERGY STAR certified UPS provides backup power and protection during damaging surges, spikes or power outages while remaining energy efficient.



Vertiv™ Liebert® APS Single Phase, Modular Online Double Conversion UPS, 5kVA - 20kVA N+1



The Liebert® APS is a double conversion on-line UPS that provides mission-critical availability while reducing costs and maintaining flexibility for the future.

- Modular and scalable UPS with internal redundancy capability.
- Ideally suited for small-to-medium data center, network closets and IT server rooms in either a rack or free-standing format.
- Offers capacity-on-demand with scalable Vertiv™ FlexPower™ core modules — allowing capacity upgrades in 5 kVA/4.5 kW increments — without powering down.
- Vertiv™ Liebert® Intellislot™ IS-UNITY-DP communications card factory installed (Web, SNMP and BMS protocols).
- Optional Environmental sensors, connect up to 10 simultaneously (temperature, humidity, contact closure, and leak detection).
- Standard 5-year factory warranty.

Vertiv™ Liebert® MicroPOD Maintenance Bypass Switch, for UPS Systems 3kVA and smaller



The Liebert® MicroPOD is a maintenance bypass with power distribution designed to enable scheduled maintenance or UPS replacement without disrupting power to the connected equipment.

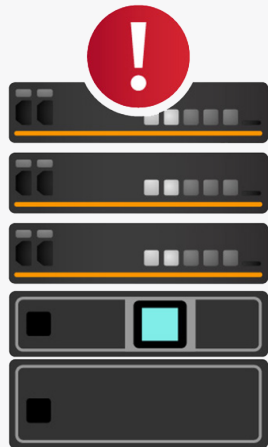
- “Must have” accessory, provides power transfer to avoid shutdowns due to UPS servicing.
- Zero-U design, mounts to the rear of the Vertiv™ Liebert® GXT UPS or capable of separate rack mounting allows it to be used with any single phase UPS.
- Provides bypass and multiple output plug configurations for easy system configuration.

Vertiv™ Liebert® TDU, 3500, 4000, and 5000 VA/W



The Liebert® TDU is a transformer in a rack-tower enclosure with integral distribution and forced air cooling.

- For use with 208V-only (HV/L620/L630) UPS to power 120V loads.
- Delivers both 208V and 120V power to support critical IT infrastructure.
- Designed to accommodate a range of input voltages.



Is it time to trade in and trade up?

An aging UPS can threaten uptime and overall productivity

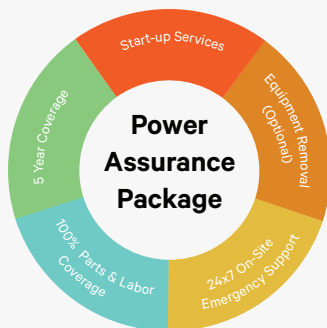
Make upgrading your UPS easier and more cost-effective than ever by contacting a Vertiv Partner today to get your trade-in started.

With the Vertiv™ Trade-In program, you can save money on the cost of state-of-the-art Vertiv™ Liebert® GXT, Vertiv™ Liebert® PSI, or Vertiv™ Liebert® APS UPS systems while eliminating the hassle and cost involved with recycling your old units.

You can trade in almost any aging single-phase UPS unit*—Vertiv or a competitor's brand—and choose to upgrade to a new Liebert® GXT or Liebert® PSI UPS system. These advanced systems combine higher availability with exceptional energy efficiency to afford better protection for your equipment at lower operating costs.

UPS Services

Power Assurance Package



Vertiv's exclusive Power Assurance Package offers lifecycle power management for critical single-phase UPS systems, eliminating the concerns surrounding all aspects of UPS support.

- Available with Vertiv™ Liebert® APS, Vertiv™ Liebert® PSI, Vertiv™ Liebert® GXT and Vertiv™ Liebert® ITA2 UPS products, from 500VA – 20kVA.
- Installation and startup services.
- Five-year, hassle-free protection plan.
- Safe disposal of UPS/battery.
- 24x7 on-site emergency response.
- Parts and labor coverage.

Power Continuity Services



Vertiv™ Power Continuity Services is a complete line of battery and UPS replacement services for the Liebert® GXT and Liebert® PSI systems, commonly used at the edge of an IT network in small or remote sites.

Three levels of services that help ensure continuous power for your vital applications:

- UPS restoration services provides a replacement UPS battery pack, shipped from Vertiv, ready for your IT resources to install.
- UPS refresh includes a replacement battery pack, installation and startup by our factory-authorized technicians, a wellness check, spent battery removal and disposal, optional two-year service contract, and optional remote services.
- UPS replacement gives you a new UPS with installation, startup, legacy equipment removal and disposal, an optional five-year protection plan, and optional remote services.

Rack Power Distribution

Vertiv™ PowerIT Basic Rack PDU



Certifications: UL Listed (North America), CE Marked (Global), RoHS Compliant, TAA compliant

The PowerIT Basic Rack PDU family delivers reliable power distribution at a competitive price point.

- Every unit is 100% tested for reliability and functionality.
- Flexibility to meet a broad range of requirements, with a variety of electrical and receptacle configurations available.
- North American units are UL listed in accordance with common data center and insurance provider requirements.

Vertiv™ PowerIT Monitored Rack PDU



Certifications: UL Listed (North America), CE Marked (Global), RoHS Compliant, TAA compliant

The PowerIT Monitored Rack PDU family delivers reliable power distribution with the ability to monitor input power to plus or minus 1 percent accuracy and provide environmental monitoring capabilities.

- The upgradeable, hot-swappable IMD enables seamless upgrades and replacements.
- Fault-tolerant daisy chaining can link up to 40 devices to provide redundancy.
- Select units come with patented U-Lock receptacles to prevent unintentional dislodging of power cords.
- Select units feature the Combination Outlet C13/C19 receptacle to accommodate ever-changing rack power requirements with the flexibility to connect C14 and C20 plugs in the same outlet.

Vertiv™ PowerIT Switched Rack PDU



Certifications: UL Listed (North America), CE Marked (Global), RoHS Compliant, TAA compliant.

The PowerIT Switched Rack PDU family delivers reliable power distribution with the ability to monitor and control power at each outlet.

- Bistable latching relays significantly reduce the unit's power consumption.
- The hot-swappable interchangeable Monitoring Device (IMD) includes directory access protocol for secure authentication and is upgradeable to add capabilities as needed.
- Select units come with patented U-Lock receptacles to prevent unintentional dislodging of power cords.
- Select units feature the Combination Outlet C13/C19 receptacle to accommodate ever-changing rack power requirements with the flexibility to connect C14 and C20 plugs in the same outlet.

Vertiv™ PowerIT Universal PDU (UPDU)



Certifications: UL Listed (North America), CE Marked (Global), RoHS Compliant, TAA compliant.

The Vertiv™ PowerIT UPDU (Universal Power Distribution Unit) and Vertiv™ PowerIT FSC (Facility Side Cable), utilize a universal input to simplify global IT power infrastructure deployments by enabling a single PowerIT UPDU model to be used with a wide range of PowerIT FSC options available in various regionally-specific power configurations.

- 11kW and 22kW max power capacity models available to meet current and future power requirements.
- Color-coded U-Lock receptacles provide easy circuit identification and extra secure protection.
- Combination Outlet C13/C19 receptacles accommodate ever-changing rack power requirements with the flexibility to connect C14 and C20 plugs in the same outlet.
- Remote management through serial communication or any standard web browser.
- Dual network ports allow a fault-tolerant daisy-chain loop of up to 40 rPDUs, or connect up to 50 rPDUs using IP aggregation.
- All universal PDU models include ports for environmental sensors like temperature and door position.
- Every unit is individually tested for reliability and functionality.

Vertiv™ PowerIT Rack Transfer Switch



Certifications: UL Listed (North America), CE Marked (Global), RoHS Compliant, TAA compliant.

The Vertiv PowerIT Rack Transfer Switch delivers redundant power to single-corded devices. The RTS automatically detects the loss of power and switches the power load to the alternative power source in less than 4-8 milliseconds without the need for human intervention.

- Uses an open transition switch utilizing a break-before-make process for transferring between the primary and secondary power source.
- Supports out of phase transfers, eliminating a need for phase synchronization.
- Includes enhanced redundant switches and fail-safe fused thermistors to mitigate current surge during transfers, protecting critical equipment during fail-over.
- Less than 4-8ms Transfer Speeds.
- Select units feature the Combination Outlet C13/C19 receptacle to accommodate everchanging rack power requirements with the flexibility to connect C14 and C20 plugs in the same outlet.
- The upgradeable, hot-swappable IMD enables seamless upgrades and replacements.

rPDU and RTS Services

Distribution Assurance Package



Vertiv's exclusive Distribution Assurance Package offers lifecycle service and support for Vertiv™ rack PDUs from trained OEM service partners, ensuring system availability.

- Available with Vertiv™ PowerIT rack PDU and Vertiv™ PowerIT Rack Transfer Switch.
- Startup and installation services.
- OEM expertise.
- Seven-year protection plan.
- 24x7 on-site emergency response.
- Parts and labor coverage.
- Optional removal and disposal.

Vertiv™ Avocent® ITS Solutions

Vertiv™ Avocent® IPSL Serial Device



The Vertiv™ Avocent® IPSL IP Serial Device is an innovative serial IP solution that scales from edge to enterprise and increases productivity by simplifying remote access and troubleshooting of IT devices.

- Small Form Factor: Portable size for easy deployment at edge locations.
- IP Addressable: Reachable from anywhere on the network to enable remote management of serial devices.
- Security: Secure Boot with hardware root of trust for tamper proof firmware, TLS1.3, AES256 bit encryption for all communication to and from the IP serial dongle.
- Virtual Media: Mount virtual drives remotely to transfer files such as firmware upgrades or other configuration files.
- Serial: Manage up to four serial targets simultaneously with SSH serial redirection
- HTML5: HTML5 Web based user interface for simplified management.

Vertiv™ Avocent® IPUHD 4K IP KVM



The Vertiv™ Avocent® IPUHD 4K IP KVM Device provides users with remote access to servers with 4K video resolution.

- IP Addressable 4K KVM Device: Fast performing 4 IP KVM for remote access.
- Security: Secure Boot.
- Video: 4K Resolution at 30fps 24bit Color for rich user experience.
- Connections: Native USB-C and MicroUSB to connect to serial device for Serial remote access.
- Video Adapters: Connect to USB-C, HDMI, DisplayPort, and Mini DP.

Vertiv™ Avocent® IPIQ IP KVM



The **Vertiv™ Avocent® IPIQ** is a zero-U IP KVM solution that scales from edge to enterprise and simplifies remote access and troubleshooting of IT devices with enhanced video resolution.

- Small Form Factor: ZeroU design for easy installation in rack.
- IP Addressable: IP addressable remote KVM solution with session sharing.
- Service Processors: Secondary LAN port for Service Processors.
- Video: 1920 x 1200 @30fps with 16-bit color. VGA.

Vertiv™ Avocent® DSView Solution Management Software (MP1000)



The **Vertiv™ Avocent® DSView Solution Management Software** suite enables secure remote monitoring and control for IT infrastructure, allowing infrastructure managers to capitalize on automated processes and streamline their continually expanding duties. Remotely access IT management appliances such as serial access devices (Ex. Vertiv ACS 800/8000 and IPSL), IP-KVM devices (Ex. Vertiv IPUHD and MergePoint Unity KVM), as well as Vertiv or 3rd party power devices (Ex. Vertiv PowerIT rPDU and Vertiv Liebert GXT5 UPS).

DSView Solution Management Software can be deployed as the MP1000 in two forms:

- A pre-loaded, ready-to-install appliance (MP1000)
- A virtual appliance within your own infrastructure (MP1000VA)

Overview

- Remote management: Remotely manage and provision compute network storage and visibility to infrastructure devices under a single platform. Connect to management cards over the network or through serial.
- Automate configuration processes: Use the Management Platform to increase your agility by automating device management processes and shortening their deployment times. Automate items such as configuration changes, firmware uploads, and status reporting.
- Maintain infrastructure resilience: Leverage the always-on, always-connected out-of-band functionality to rapidly recover from any outages, especially at remote sites.
- Enhance security of your IT infrastructure: Prevent unauthorized access to specific devices and tightly control the operations authorized users can perform on them. Receive security updates on an ongoing basis.
- Manage physical infrastructure: Manage and control Rack PDUs and UPS's at enterprise and edge locations.
- Enable virtual machine sessions: Launch remote VM sessions for approved users to access applications securely, while auditing remote access to further enhance security.
- Manage open standard devices: Use the Management Platform to manage and control your heterogenous infrastructure, including OpenBMC and Redfish devices. Modernize and standardize service processor management to reduce complexity.

Vertiv™ Avocent® DSView™ Rack Manager



The **Vertiv™ Avocent® DSView™ Rack Manager** is an appliance designed to manage IT infrastructure and is built upon a secure common architecture which can scale from Enterprise to Edge. The Vertiv Avocent DSView Rack Manager can be used alone or integrated into the Vertiv™ Avocent® DSView™ Solution to enable comprehensive IT monitoring and management.

- Enterprise class rack manager appliance.
- Minimize costs with IP consolidation, PoE and API automation.
- HTML5 Viewer for KVM sessions.
- Discovery of SPs, IP KVM, and serial management devices.
- Manage Service Processors locally.
- HTML5 On board web interface.
- Non blocking, highly scalable.

Vertiv™ Avocent® ACS 8000 Advanced Console Systems



The **Avocent® ACS 8000 Serial Consoles** deliver secure in-band and out-of-band visibility and control to downstream equipment in enterprise data centers, as well as cloud and colocation facilities.

- Integrated Power Management with Vertiv™ PowerIT PDUs and Vertiv™ Liebert® UPS systems as well as third-party power product vendors.
- Cellular capabilities for primary connectivity at remote locations or failover during network outages.
- Access and troubleshoot remote locations using automatic network failover to cellular, Ethernet or analog modem.
- Fast, automated configuration with Zero-Touch Provisioning (ZTP).
- Models available with up to 48 RJ45 serial target ports and 8 USB ports to support new IT equipment and external devices.

Vertiv™ Avocent® MergePoint Unity™ KVM over IP Switch



Certifications: TAA compliant, FIPS 140-2.

Compliance: Based on the FIPS 140-2 validated cryptographic module(s) (Certificate #1051).

The Avocent® MergePoint Unity™ KVM over IP Switch provides IT administrators a complete remote management solution to access and control servers, networking equipment and other devices found in data centers and branch offices.

- Meet service level agreements and minimize downtime through a unified approach that provides IT administrators a faster method to diagnose, reconfigure or restore equipment.
- Virtual Media support enables USB media such as CD-ROMs, flash memory and external drives to be virtually attached to a remote server's USB port.
- CAC/Smart Card Support allows remote or local users to map a USB-based smart card reader to the attached servers and authenticate using their smart cards.
- FIPS 140-2 compliance: based on the FIPS 140-2 validated cryptographic modules (certificate number 1051).
- Remote KVM sessions support HTML5 which eliminates the need to install a java on clients.

Vertiv™ Avocent® AutoView™ AV3000 KVM Switches



The Avocent® AutoView™ AV3000 series offers consolidated server management options for small data centers and remote/branch/offices.

- Simplify local and remote access to your IT infrastructure with a best-in-class, field-proven line of Vertiv™ Avocent® switches.
- Switches can be tiered to provide consolidated management of up to 256 targets.
- Common Access Card (CAC)/Smart Card support with encryption and password protection provides security you can depend on.

Vertiv™ Avocent® LCD Local Rack Access (LRA) Console



Certifications: TAA compliant, UL, CE, CCC, BSMI, RCM, cUL, IC, EAC, VCCI, KCC FCC Class A.

The Avocent® LCD LRA Console family provides the simplicity, efficiency and ease of use to make it the perfect in data center access point. The LRA line enables ease of access to multiple servers making software upgrades, troubleshooting, and system monitoring convenient and less time-consuming.

- Provides an installed and integrated access point in the data center.
- Requires only 1U of rack space.
- Compatible with all Vertiv data center KVM switches.
- Keyboard available in 8 languages.
- Power efficient during operation and standby.
- Available in an 8- or 16-port digital KVM switch bundle.
- Includes a widescreen LED LCD panel and a full desktop-style keyboard with touchpad.

Vertiv™ Avocent® HMX 5000/6000/8000 High Performance KVM Systems



Certifications: TAA, CE, FCC approvals.

The Avocent® HMX High Performance KVM system is a digital, IP-based solution that provides a highly flexible way to connect hundreds of users to thousands of servers and workstation equipment in a secure, real-time manner.

- Ideal for control rooms with real-time control with pixel perfect digital video, supporting resolutions up to 4K - 3840 x 2160 @ 60 Hz
- Supports redundant network operation through units that automatically detect whether the network is in operation and automatically change to a second port when a failure is detected.
- Enables connection of USB devices from mice and keyboards through to graphics tablets and joysticks alongside mass storage devices.
- Remote maintenance and out-of-band BIOS level access with high video performance through Real VNC viewer.
- Easy centralized management with user rights and audit trails through the Vertiv™ Avocent® HMX Advanced Manager.
- Small form factor transmitter available that takes up zero-U of rack space.

Vertiv™ Avocent® HMX 6500R High Performance KVM Receiver



The Avocent® HMX 6500R High Performance KVM System receiver delivers KVM and VM access without requiring additional hardware or compromise on KVM functionality.

- Crisp and clear picture quality, audio, and USB 2.0 to single/dual screens over a single 1GbE link.
- Dual-head displays for physical machines or Single-head display for virtual machines (not both).
- Real-time access to unlimited physical and virtual machines from a single human-machine interface.
- Virtual Machines count towards endpoint license.
- Accessible anywhere on any device with ease and security.

Vertiv™ Rack Mount Power Supply (RMPSU)



The Vertiv™ RMPSU delivers the same reliability of Vertiv Avocent's traditional power solutions but with economies of scale and convenience that aren't possible with external power supplies.

- Each unit provides 8 or 16 independently controllable 12V outputs.
- Cable converters available for 12V to 5V conversions.
- Control and monitor the Vertiv RMPSU via a secure HTTP interface.
- Rated to 500,000 hours.

Vertiv™ Avocent® Longview™ 5500/5520 Extenders



Certifications: TAA, CE, FCC approvals.

The Avocent® LongView™ 5000 series of high performance extender solutions provide a desktop experience in environments where conditions make it advantageous to operate and manage critical business systems from a secure, monitored location.

- Users can access systems and applications remotely without sacrificing video quality, audio quality or device capability.
- Single or Dual Head High-definition Display Port Video Supports DisplayPort Dual Mode (DP++) and can transmit maximum resolution of up to 3840 x 2160 @ 60 Hz(UHD 4K). The 5500 offers local port passthrough while you get true dual head 4K via the 5520.
- USB 2.0 enables connection of up to six USB human interface devices including mice, keyboards, graphics tablets, touchscreens, jog shuttles, joysticks, 3D explorers, mass storage devices and isochronous devices like webcams and headsets.
- Analog and Digital audio options available.
- Plug and play: the LongView™ Series extenders are delivered in a zero config state so you can plug them in and start working right away without waiting for drivers or software to install.

Vertiv™ Avocent® LongView™ 5000 Series Extenders



The Avocent® LongView™ 5000 series of high performance extender solutions provide an at the desktop experience in environments where conditions make it advantageous to operate and manage critical business systems from a secure, monitored location.

- Users can access systems and applications remotely without sacrificing video quality, audio quality or device capability.
- High-definition Display Port Video Supports DisplayPort Dual Mode (DP++) and can transmit maximum resolution of up to 3840 x 2160 (UHD 4K) with a single monitor, or two 1920 x 1200 (WUXGA) video streams in a dual monitor configuration.
- USB 2.0 enables connection of up to six USB human interface devices including mice, keyboards, graphics tablets, touchscreens, jog shuttles, joysticks, 3D explorers, mass storage devices and isochronous devices like webcams and headsets.
- High definition analog stereo audio input and output. S/PDIF input also supported
- Plug and play the LongView™ 5000 Series extenders are delivered in a zero config state so you can plug them in and start working right away without waiting for drivers or software to install.

Vertiv™ Avocent® LongView™ 4000 KVM Extenders



The Avocent® LongView™ 4000 KVM extenders enable you to locate your critical computing hardware in a secure and temperature controlled environment, while maintaining the same user experience. This improves data security, removes computers from harsh environments and addresses limited workspace environments.

- Video, USB 2.0 (Low and Full speed) and audio all pass along a single cable, providing up to 50 meters of extension.
- The transmitter is powered via its USB port to reduce the need for external power supplies.
- Supports DVI-D (HDMI with adapter) video on single or dual screens, with resolutions up to 1920 x 1200 @ 60Hz.
- The LongView™ 4000 series extenders are delivered in a zero configuration state so you can plug them in and start working immediately. There's no need for additional drivers or software.
- USB 2.0 support for any USB human interface device from mice and keyboards to graphics tablets, touchscreens, jog shuttles, joysticks, 3D explorers and mass storage devices. Full speed (12Mbps) isochronous devices such as headsets are also supported.

Vertiv™ Avocent® LongView™ 3000 KVM Extenders



The Avocent® LongView™ 3000 extenders let you place a keyboard, monitor, mouse, speakers and microphone up to 1,000 feet away from a computer or Vertiv™ Avocent® KVM switch.

- VGA resolutions of 1920 x 1200 are achievable at up to 300 meters (1000ft).
- The LongView™ 3000 series extenders are delivered in a zero configuration state so you can plug them in and start working immediately. There's no need for additional drivers or software.
- USB 2.0 (low and full speed) support allows all USB compatible accessories (including isochronous devices) to be extended connected to its 4 port hub.

Vertiv™ Avocent® Cybex™ SC800 and SC900 Secure Desktop KVM Switches



The Avocent® Cybex™ SC800 / SC900 Secure Desktop KVM switches are field-proven, secure, KVM switching solutions with special support for government agencies and security conscientious organizations.

- The Cybex SC800/900 DPH, DPHC, and DVI-D series secure desktop KVM switching portfolio, available in single and dual head models, eliminates redundant peripherals and reduces desktop clutter.
- Prevents information leaks, transfer or crosstalk between adjacent ports and filters ultrasonic audio frequencies via unidirectional optical data diodes (UODD).
- Active intrusion detection and tamper-evident holographic labels prevent hardware from being compromised.
- Universal Video Connectors support DP, HDMI, and DVI-D.

Certifications: TAA compliant, BAA, Designed for NIAP / Common Criteria Protection Profile for Peripheral Sharing Device (PSD) v4.0.

Vertiv™ Avocent® Cybex™ Secure MultiViewer KVM Switch



The Avocent® Cybex™ Secure MultiViewer KVM continues to provide the KVM solution required in accessing both classified and non-classified data.

Simultaneously view multiple computers on a single display.

- Ability to interact with various security classifications on a single screen.
- With CNS, keyboard and mouse transitions seamlessly when moving the cursor across window borders while holding the left CTRL key.
- Universal video connectors support DP, HDMI or DVI-D.
- Smart-card (CAC) or biometric readers for authentication across multiple secure computers.
- Multi-colored button LEDs for enhanced channel identification.

Certifications: Designed for Common Criteria Protection Profile for Peripheral Sharing Device (PSD) v4.0.

Vertiv™ Avocent® Cybex™ SCM 100 Series Secure Desktop Matrix



The Avocent® Cybex™ SCM 145 secure desktop Matrix KVM switch offers a proven solution for guarding against cyber intrusion at the desktop.

- Allows users to securely interact with multiple computers and observe two active computers simultaneously thus improving situational awareness Through cursor navigation switching (CNS), users have the flexibility to manage and monitor their data by simply pressing the left CTRL key and moving their mouse across window borders.
- Dedicated peripheral port permits a secure connection to external USB devices, including CAC smart card readers, fingerprint readers, and face recognition devices.
- Universal data connectors support DP, HDMI, and DVI-D.
- Protected video display emulators eliminate potential data leakage from display to computer.
- Unidirectional Optic Data Diodes (UODD) allow data to only flow in one direction.

Certifications: TAA compliant, BAA, Designed for NIAP / Common Criteria Protection Profile for Peripheral Sharing Device (PSD) v4.0.

Vertiv™ Avocent® Cybex™ SCKM 100 Secure Desktop KM Switches



Certifications: TAA/BAA compliant, CE, RCM, FCC class B, VCCI, TUV US, TUV Canada, Designed for NIAP / Common Criteria Protection Profile for Peripheral Sharing Device (PSD) v.4.0.

The Avocent® Cybex™ SCKM 100 switch provides real-time access to up to 4 systems at a time from a single keyboard and mouse.

- Cursor navigation switching lets users switch control between systems by simply moving the mouse cursor from one display monitor to another while pressing the left CTRL key.
- Unidirectional Optical Data Diodes (UODD) assure YSB peripheral isolation enabling data flow from devices to host only.

Vertiv™ Avocent® SV 200 and Vertiv™ Avocent® SV 300 Desktop KVM Switches



Avocent® SV 200/300 Desktop KVM switches simplify access to essential business systems.

- Universal video connectors support DVI-D, HDMI, DisplayPort, and support for resolutions up to UHD 4K maintain image quality is highly accurate and video plays at the highest definition possible.
- Managed copy and paste allows content to be copied from one system to another.
- Independent audio and USB switching lets users freeze audio and USB 3.0 peripherals while simultaneously working on a different system.
- Multiple USB ports provide easy connectivity to external USB devices, quick data transfer and high-speed charging of mobile devices.

Vertiv™ Avocent® SVKM 100 Desktop KM Switches

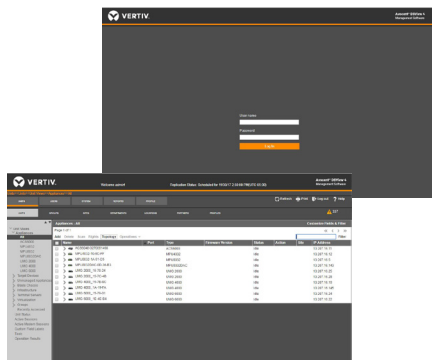


The Avocent® SVKM 100 switch provides real-time access to up to 4 systems at a time from a single keyboard and mouse.

- Cursor navigation switching lets users switch control between systems by simply moving the mouse cursor from one display monitor to another.
- Independent audio and USB switching gives users the ability to freeze audio and USB devices to a specific channel so these feeds are maintained as the cursor switches between system monitors.
- Managed copy and paste allows content to be copied from one system to another.
- High-speed mobile device charging port provides a quick way to charge mobile phones and other devices.
- Pre-set display configurations are easily modified for specific environments with a user-friendly administrator tool, enabling flexible assignment of USB devices for each user.

Software

Vertiv™ Avocent® DSView™ Software



Avocent® DSView™ software is a centralized management tool providing remote access to critical IT assets as well as management of Vertiv and 3rd party appliances. DSView™ helps IT and datacenter teams administer vital IT equipment such as servers, virtual machines, PDUs, UPS, routers and switches via KVM (Keyboard, Video, and Mouse) and serial connections. The complete software package also provides users the ability to manage the appliances that facilitate the remote sessions (ex. Vertiv™ ACS serial consoles and Vertiv™ Mergepoint Unity™ IP-KVM).

- Web-browser based remote access to servers, virtual machines, and IT/network infrastructure equipment for provisioning, day-to-day management, and disaster recovery.
- Detailed event tracking, session logging, and event notification.
- Management of Vertiv and 3rd party appliances such as Vertiv ACS serial consoles, Mergepoint Unity & Autoview KVM, and Vertiv™ PowerIT rPDU.

Vertiv™ Power Insight



Vertiv™ Power Insight is a web-based solution for managing and monitoring up to 100 Vertiv™ UPSs and Vertiv™ rPDUs that provides a quick way to safely shutdown IT devices based on user-configured parameters.

Easy to Connect and Control

- Free download from Vertiv.com.
- On-premise and remote UPS and rPDU monitoring for 100 devices with notification and control for Network based devices.
- Auto-discovery of Vertiv™ Liebert® devices for ease of installation and configuration.

Intelligently Controlled Shutdown

- Automatic Shutdown protection for physical and virtual servers.
- VMWare vCenter / vSphere Integration out of the box for virtual compute management.
- Sequential server shutdown function to extend runtime for the most critical loads.

Single Pane of Glass View

- Dashboard views of key data points such as capacity load percentage, output current, battery percentage charge and battery time remaining.
- Alarm views with data that can be sorted or filtered.
- Alarm notifications via email, SMS and on-screen icons.
- Summarized data of individual devices.

Vertiv™ Power Assist



Vertiv™ Power Assist is a free software used to gracefully shutdown an IT device when the UPS battery backup experiences a threatening condition. The software notifies users of an event, displays key metrics and logs historical data. It is easy to install and protects computers from damage and data loss during a power event.

Easy to Connect and Control

- Free download from Vertiv.com.
- Serial / USB connectivity for direct connection in personal and general business applications.
- Auto-discovery of serial port / USB connected devices.

Intelligently Controlled Shutdown

- Directly connected compute shutdown via direct connection.
- Easy to install, configure, and upgrade.
- Automated shutdown configuration options, e.g., remaining battery percentage or runtime.
- Scripted sequential and scheduled shutdown for virtual compute and non-graphical user interface based devices.

Monitoring & Management

- Immediate alarm notifications via email.
- On-Screen Dashboard - displays key system status information and alarms.
- Data and alarm storage for analysis.
- Maintenance mode; shutdown on-hold temporarily.

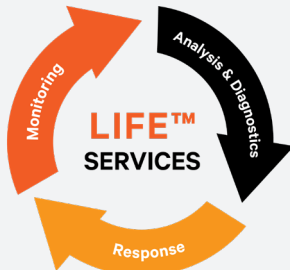
Vertiv™ Environet™ Alert



Environet™ Alert is an easy to use, on-prem monitoring solution which provides remote monitoring for critical infrastructure.

- **Increase business flexibility** - Vendor neutral device monitoring to run your business the way you need. Supports device communication via SNMP, Modbus TCP/IP and BACnet IP.
- **Affordable solution** - Environet Alert is a budget-friendly solution, making it easy to deploy for small to medium businesses, edge facilities and enterprise data centers.
- **Fast and easy configuration** - Manage your own system configuration and make changes on the fly, eliminating the need for support touchpoints (optional service packages are available, if needed).
- **Customize your data** - Set your own views with the modern user interface to focus on the data you need to visualize for your business.

Vertiv™ LIFE™ Remote Diagnostic Services for Rapid Response



Uptime assurance

- Continuous monitoring for early detection of trends and operating anomalies.
- Analysis and interpretation of alarm and status messages.

Rapid incident response

- Automatic transmission of data for analysis.
- Concurrent diagnosis and dispatch of engineer to site.

- Shipment of parts for corrective maintenance.

Increased insight and ease of management

- Notification of operating conditions that may impact system health.
- Periodic trend and analysis reports.
- Integration of remote and on-site services to ensure business continuity.

Rack Cooling

Vertiv™ PowerIT SwitchAir™



Certifications: TAA/BAA compliant.

The PowerIT SwitchAir™ helps prevent network switch failure by channeling cool air from the front of the rack to the air intakes of the device regardless of where the equipment is mounted.

- Creates a barrier to effectively prevent hot exhaust air from recirculating to device intakes.
- Simple and quick installation in all standard racks or cabinets.
- Reduces the chance of network switches overheating and premature equipment failure due to high intake temperatures by directing cool air to device intakes.
- Improves equipment efficiency by providing network equipment with the same cold aisle air temperature as other devices in the rack.
- Standard 3-year warranty, upgraded to 5 years with product registration.

Vertiv™ VRC Rack Cooling System, 3500 Watts



The Vertiv™ VRC Rack Cooling System provides cooling for small IT rooms in either a self-contained or a split system.

- Fast, easy installation and set-up - The self-contained Vertiv™ VRC100 series models include integrated heat rejection system, come pre-charged with refrigerant, and plug connection for quick plug-and-play installation.
- Designed to fit within standard 19" network rack rails.
- Easy to handle - units weigh under 150 lbs.
- Saves floor space - Self-contained rack-mounted cooling system takes up 10U while the Split system takes up only 6U.
- Standard 2-year warranty covering every component of the system.

Three-Phase UPS

Vertiv™ Liebert® ITA2 UPS 3-Phase 10kVA



The Liebert® ITA2 UPS offers economical, efficient and reliable three-phase power for critical loads between 8-10kVA.

- **Flexible battery configuration:** Now with both VRLA and the new Vertiv MPL®, the first rack-mounted 3-phase lithium-ion battery in North America
- **Flexible placement:** Use in a rackmount or tower configuration.
- Features scalable battery runtimes, output distribution options, a high-power factor and an optional maintenance bypass cabinet.
- Compact, high-power density and high-power factor maximizes the usable power.
- Lower first costs and lower TCO compared to competitive models.

Vertiv™ Liebert® EXS UPS 3-Phase 10 - 30kVA



The Liebert® EXS UPS delivers maximum power capacity, simplicity, reliability and efficiency in a compact three-phase power solution with a reduced footprint.

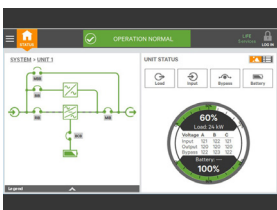
- Robust availability is available from the integrated maintenance bypass and advanced monitoring capabilities.
- Flexibility is enhanced using output distribution and variable battery runtime options.
- Low TCO is maintained from the high operating efficiency levels and reduced installation costs.

Vertiv™ Liebert® EXM 3 Phase-UPS, 10-250kVA



The row-based Liebert® EXM is a transformer-free, on-line UPS that provides modular hardware scalability and N+1 redundancy from 10-200kVA in 208 volt configurations and 50-250kVA in 480 volt configurations.

- Reduces energy consumption and operating expenses with up to 99% efficiency in Eco Mode and up to 97% efficiency in double conversion mode.
- Offers future-proof scalability for capacity or redundancy.
- Complemented with a line of optimized ancillaries such as maintenance bypass and battery cabinet options designed to minimize footprint and cost.
- Innovative touchscreen control panel offering unprecedented situational awareness, customer configurability, multiple levels of access security and glove safe operation.
- Improves issue resolution and enhances reliability via the optional integrated Vertiv™ Albér™ BDSUi battery monitoring system, compatible with traditional VRLA batteries, Lithium Ion batteries, or other energy storage devices.
- Leverage the capabilities of our Unity Communications card and sensors to monitor temperature, humidity, access, leaks and more.



Certifications: TAA/BAA compliant, UL 1778 , UL 924 and CSA certified. Meets current requirements for safe high performance UPS operation. ENERGY STAR qualified.

Parts and Labor Warranty	Warranty Preferred	Warranty Premier
 <p>Parts Included All parts included except EOL components and consumables</p>	 <p>Parts Included All parts included except EOL components and consumables</p>	 <p>Parts Included All parts included except EOL components and consumables</p>
 <p>Labor Included The cost of labor is included</p>	 <p>Labor Included The cost of labor is included</p>	 <p>Labor Included The cost of labor is included</p>
	 <p>Preventive Maintenance PM (8x5) Visit(s) within Warranty Extension to maintain continuous and optimal equipment performance</p>	 <p>Preventive Maintenance PM (7x24) Visit(s) within Warranty Extension to ensure continuous and optimal equipment performance</p>
		 <p>Response Time If an anomaly occurs, CE visit is granted within known and established amount of time</p>

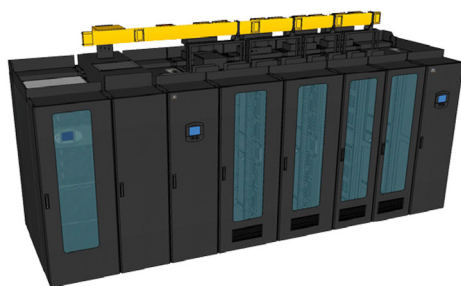
Vertiv Extended Warranties are a flexible and robust way to lengthen warranty coverage beyond the expiration of the standard Vertiv™ Liebert® Product Warranty

- Available with all EXS and ITA2 Vertiv™ Liebert® products, and select Vertiv™ Liebert® EXM configurations
- Flexible duration lengths to cover Commissioning/Substantial Completion Storage/Delays
- Preferred and Premier warranties include additional entitlements beyond parts and labor to improve UPS lifecycle performance and reduce unplanned downtime

Site Applied Products

Contact your Local Vertiv Office for application support and pricing.

Vertiv™ SmartRow™ Intelligent, Integrated Infrastructure in a Self-Contained Line-Up



The Vertiv™ SmartRow™ solution has a room neutral design that lets you avoid many of the significant costs that come with a conventional data center buildout.

- Favorable implementation costs compared to using a conventional data center approach, due to savings from integrated fire suppression and ability to work in an existing non-raised floor environment without dedicated room cooling.
- Reduce energy consumption by up to 27% compared to a data center with conventional design, perform less maintenance and reduce the costs of adding new equipment.

Capacity: 20-80kW up to 10 racks.

Cooling: In the row DX split system and optional redundancy.

Power: N and N+1 configurations.

Floor: Primarily non-raised.

Key Applications: Small data centers, remote sites, disaster recovery.

Certifications: TAA/BAA compliant.

Vertiv™ Liebert® CRV Self-Contained Row-Based Data Center Cooling, 10-40kW



The Liebert® CRV system offers highly flexible, in-row cooling for data centers requiring higher density cooling with greater efficiency and capacity.

- Integrates within a row of data center racks, providing cooling close to the server heat source, for efficient and effective data center heat management.
- Precision cooling and humidity control.
- Features variable speed EC plug fans and variable capacity digital scroll compressor.
- Operates efficiently with Vertiv™ Liebert® iCOM™ controls.

Certifications: TAA/BAA compliant, AHRI.

Vertiv™ Liebert® Mini-Mate Cooling System 3.5/28kW



The Liebert® Mini-Mate is a zero footprint computer room cooling system for 7x24 temperature and humidity control and air filtration.

- Requires no floor space because it installs above a dropped ceiling.
- Easy to service, requiring only front access for maintenance.
- Improves energy efficiency with free-cooling option.



Vertiv.com | Vertiv Headquarters, 505 N Cleveland Ave, Westerville, OH 43082, USA

© 2025 Vertiv Group Corp. All rights reserved. Vertiv™ and the Vertiv logo are trademarks or registered trademarks of Vertiv Group Corp. All other names and logos referred to are trade names, trademarks or registered trademarks of their respective owners. While every precaution has been taken to ensure accuracy and completeness here, Vertiv Group Corp. assumes no responsibility, and disclaims all liability, for damages resulting from use of this information or for any errors or omissions. Specifications, rebates and other promotional offers are subject to change at Vertiv's sole discretion upon notice.